



**Darcon F79 120W UVA**

F79 T12 120W PH

**Item No: 30635**

**Dimensions**

Length (nom.)	2000,0 mm
Length without pins (max)	2001,3 mm
Length base – pin (min)	2006,0 mm
Length base – pin (max)	2008,4 mm
Length with pins (max)	2015,5 mm
Diameter (max)	40,4 mm
Base	G13

**Electrical Data**

Supply voltage	230 V +/-0,2%
Ballast (nominal)	120W / 230V
Lamp wattage (nominal)	115W +/-5W
Lamp current (nominal)	1130 mA
Lamp voltage (nominal)	118 V +/-10V

**Physical Data**

UVA Irradiance (315 - 400 nm) <sup>1</sup>	10,5 W/m <sup>2</sup> +/-10%
UVB Irradiance (280 - 315 nm) <sup>1</sup>	108 mW/m <sup>2</sup> +/-10%
UVB/UVA ratio	1,0%
Eer (250 – 400 nm) <sup>1</sup>	18 mW/m <sup>2</sup> +/-15%
Recommended useful life	800 Hours
Output after 500 hrs (based on 1h value)	80% -10%

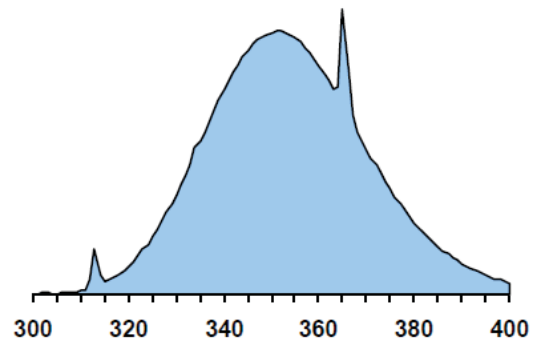
**Lamp Specifications**

(typical values acc. IEC / EN 61228)

- a) Lampenabmessungen  
- see dimensions
- b) Reflector
- c) Specified ballast                      Cosmopower S 120W / 230V
- d) Electrical data
  - Lamp power (typical)                      115 W
  - Lamp current (typical)                      1130 mA
  - Lamp voltage (typical)                      118 V
- e) Effective Irradiance
  - UV-erythem (250 - 400 nm)                      19 mW/m<sup>2</sup>
  - NMSC (250 - 320 nm)                      21 mW/m<sup>2</sup>
  - NMSC (321 - 400 nm)                      8 mW/m<sup>2</sup>
- f) Equivalency code                      120-O-19/2,9

<sup>1</sup> acc. IEC measured in a distance of 25 cm to the lamp axis under stable operating conditions

**Relative Spectral Distribution**



**Recommended Exposure Time**

UVA irradiance in W/m <sup>2</sup>	First session time in minutes	Maximum session time in minutes by skin type		
		2	3	4
90	10,6	26,6	37,2	47,8
140	6,8	17,1	23,9	30,7
190	5,0	12,6	17,6	22,6

**Typical irradiance of a treatment unit<sup>3</sup>: 140 W/m<sup>2</sup>**

Data regarding effective dose and recommended treatment times, are basing on norm DIN EN 60335-2-27.

<sup>3</sup> The treatment unit of reference contains 20 lamps in the bench and 24 lamps in the canopy. The bench is covered by double acrylics and the canopy by a single one. Please contact the equipment manufacturer for individual irradiance of your model. These information are for orientation use only and have to be coordinated / adjusted individually.