

HMI, double-ended

Metal halide lamps

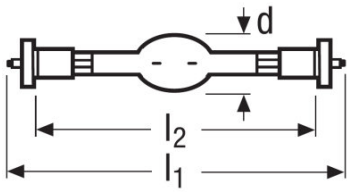


Product family features

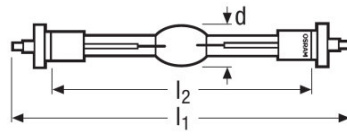
- Color temperature: approx. 6,000 K (Daylight)
- High color rendering index: $R_a >$
- Very bright with luminous flux up to 2.3 million lumen
- Very high luminous efficacy up to 100 lm/W
- Robust design with eXtreme Seal (XS) technology, allowing up to 450°C at the pinch seal
- Hot restart capability



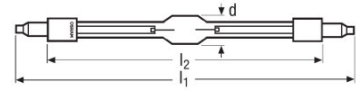
Product family datasheet



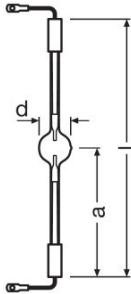
Product line drawing



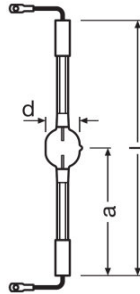
Product line drawing



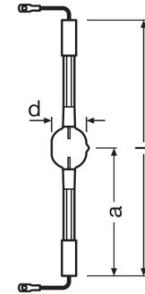
Product line drawing



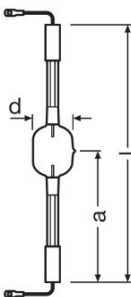
Product line drawing



Product line drawing



Product line drawing



Product line drawing

Product family datasheet

Technical data

Product description	Electrical data		Photometrical data			Dimensions & weight	
	Nominal voltage	Nominal current	Nominal luminous flux	Color temperature	Color rendering index Ra	Diameter	Length
HMI 575 W/DXS	95.0 V	7 A	49000 lm	6000 K	90	21.0 mm	135.0 mm
HMI 1200 W/DXS		13.8 A		6000 K	> 90	27.0 mm	220.0 mm
HMI 2500 W/S XS	115 V	25.6 A	240000 lm	6000 K	90	31.5 mm	210.0 mm
HMI 2500 W/DXS	115 V		240000 lm	6000 K	90	31.5 mm	355.0 mm
HMI 4000 W/DXS	200 V		380000 lm	6000 K	90	36.0 mm	405.0 mm
HMI 4000 W/DXS SOLAR	204 V	23.5 A		6000 K	> 90	36.0 mm	405.0 mm
HMI 6000 W/DXS		55.0 A	570000 lm	6000 K	90	54.0 mm	450.0 mm
HMI 12000 W/DXS	240 V	84.0 A	150000 lm	6000 K	90	64.0 mm	470.0 mm
HMI 18000 W/DXS	380 V			6000 K	> 90	70.0 mm	500.0 mm
HMI 24000 W/DXS	280 V		300000 lm	6000 K	90	83.0 mm	1000 mm

Product description	Mounting length	Length with base excl. base pins/connection	Lifespan	Additional product data	Capabilities
			Lifespan	Base (standard designation)	Burning position
HMI 575 W/DXS	115.0 mm	115.00 mm	1000 h	SFc10-4	Any
HMI 1200 W/DXS	180.0 mm	180.00 mm	1000 h	SFc15.5	Any
HMI 2500 W/S XS	150.0 mm	150.00 mm	500 h	SFa21-12	Other
HMI 2500 W/DXS	290.0 mm	290.00 mm	500 h	SFa21	Other
HMI 4000 W/DXS	340.0 mm	340.00 mm	500 h	SFa21	p15
HMI 4000 W/DXS SOLAR		340.00 mm	500 h	SFa21-12	p15
HMI 6000 W/DXS			500 h	S25.5	p15
HMI 12000 W/DXS			500 h	S30	p15
HMI 18000 W/DXS			500 h	S30	p15
HMI 24000 W/DXS			500 h	S30	p15

Product description	Certificates & standards
	EEI – Energy Label
HMI 575 W/DXS	B

Product family datasheet

Product description	Certificates & standards EEI – Energy Label
HMI 1200 W/DXS	B
HMI 2500 W/S XS	B
HMI 2500 W/DXS	B
HMI 4000 W/DXS	B
HMI 4000 W/DXS SOLAR	
HMI 6000 W/DXS	B
HMI 12000 W/DXS	B
HMI 18000 W/DXS	B
HMI 24000 W/DXS	B

Product family datasheet

Safety advice

Because of their high luminance, UV radiation and high internal pressure during operation, HMI lamps may only be operated in enclosed lamp casings specially constructed for the purpose. Appropriate filters must ensure that UV radiation is reduced to an acceptable level. Mercury is released if the lamp breaks. Special safety precautions must be taken. Information on safety and handling is available on request or can be found in the leaflet included with the lamp or in the operating instructions.

Application advice

For more detailed application information and graphics please see product datasheet.

Disclaimer

Subject to change without notice. Errors and omission excepted. Always make sure to use the most recent release.